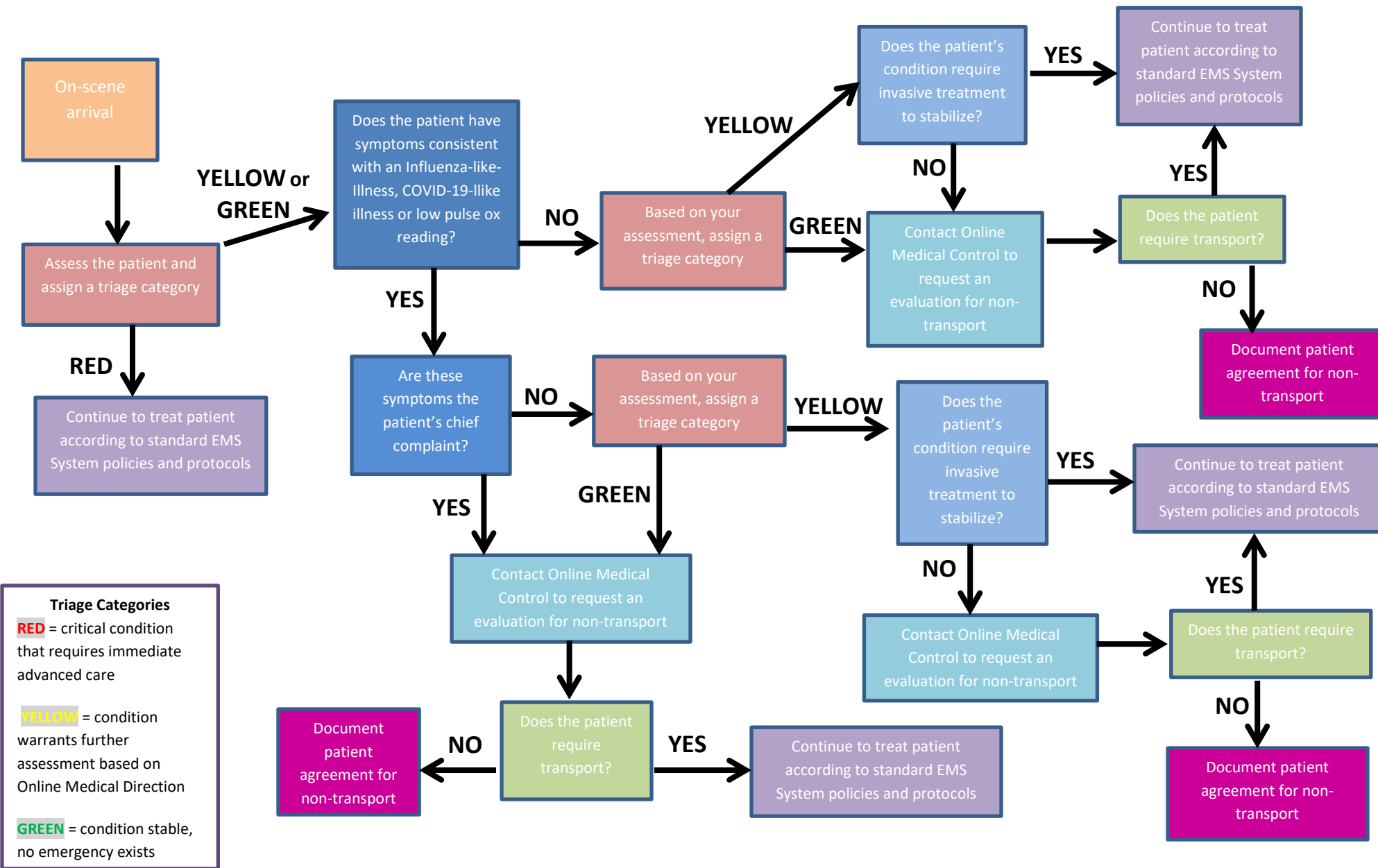


# COVID-19 EMS Telehealth or Telephone Consultation for Non-Transport: Decision Support for EMS Providers

The purpose of this decision tree is to assist EMS providers as they assess patients during the COVID-19 pandemic to determine which patients may be candidates for evaluation by Online Medical Control for non-transport.

Adoption of this protocol or a similar one is a System Plan Amendment that must be signed off on by the EMS MD and approved by the Illinois Department of Public Health.



Symptoms of Influenza-like-Illness include abrupt onset of: fever, chills, myalgia, headache, malaise, nonproductive cough, sore throat, and rhinitis. Some people who are sick with influenza do not develop a fever, especially the elderly and people who are immunosuppressed. Young children may also have nausea, vomiting, or diarrhea.

Symptoms of COVID-19-like illness include: fever, cough, and shortness of breath. Emergency warning signs include trouble breathing, persistent pain or pressure in the chest, new confusion or inability to arouse, low O2 saturation, and bluish lips or face.