

National Fire Academy, FESHE and EMS Management Education

Michael Ward, Chair
National EMS Management
Curriculum committee

Fire and Emergency Services Higher Education (FESHE) Program

Establish an organization of post-secondary institutions to promote higher education and to enhance the recognition of the fire and emergency services as profession to reduce loss of life and property from fire and other hazards.

NFA mission expanded 2008 into EMS

FESHE results 1999 - 2007

Faculty from fire-based associate and bachelor degree programs work with stakeholders to develop a model curricula.

Textbook publishers invited in 2002.

By Academic Year 2006 - 2007 all of the model fire science courses have two or more textbooks that meet the FESHE curricula.

EMS Management Degree

Michael Ward, Chair,
George Washington Univ

Jeff Lindsey PhD
NAEMSE

David Becker
IAFC EMS Section

Sebastian Wong
Las Positas College
San Fran EMS Chief

Bob Seitz and **Mike Hahn**
University of Pittsburgh

Bruce Evans, Vice Chair,
CC Southern NV

Bruce Walz PhD,
Stephen Dean PhD, and
Kurt Krumpferman
University of Maryland
Baltimore County

Erik Gaull, NFA contract
instructor

Angel Burba, Howard
Community College

October 31, 2006: First NFA meeting

January 08, 2007: **Inaugural Meeting Report**

Comprehensive list of existing EMS courses available
through six colleges and universities

List of proposed EMS Management courses

Six presentations, four informational
sessions and four trade journal articles

Two focus group sessions

Met with existing professional groups

Cal Chiefs: **EMS Academy**

Center for Public Safety Excellence

Chief Medical Officer

National EMS Management Curriculum committee

USFA/National Fire Academy | Maryland | Pittsburgh | GWU | U of Florida | St. Petersburg College | Springfield College

This is a Federal Advisory Committee Act compliant group that reports to the *National Fire Academy Board of Visitors* on a proposed national undergraduate EMS Management curricula that will use the *Fire and Emergency Services Higher Education (FESHE)* process to accomplish the committee goals.

Committee Action Plan

News: updated June 1, 2007

National Association of EMS Educators
(Hollywood, CA) Jeff Lindsey: *FESHE Curriculum* Saturday September 15 @ 12:45 PM

International Association of Fire Chiefs: Fire-Rescue International (Atlanta) Bruce Evans: *EMS Officers Professional Development Model* Tuesday August 21 @ 08:30 AM. This is part of the **Challenges and Opportunities in Fire EMS Leadership** preconference program.

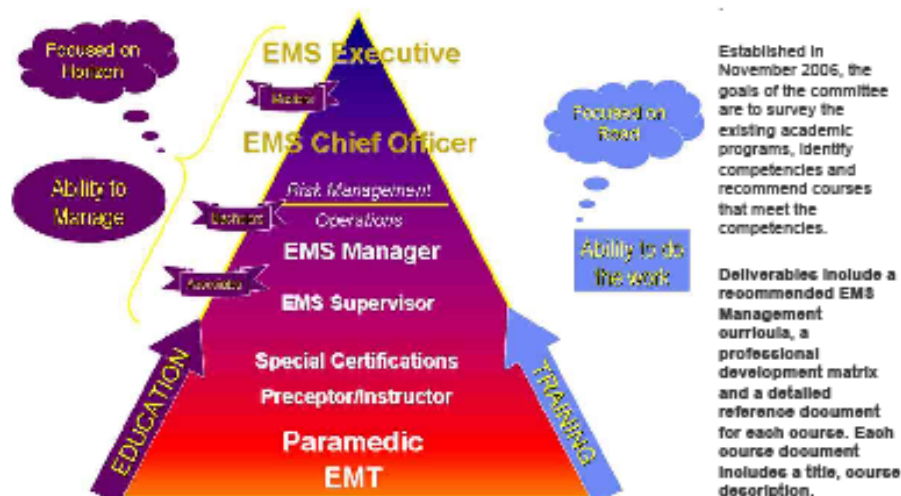
International Association of Fire Fighters: EMS on Fire (Houston) Mike Ward: Informational session TBA June 25 - 27.

FESHE 9th Annual Conference
(Emmitsburg, MD) FESHE committee *Targeted Professional Development Needs* Saturday, June 2 @ 10 am.

IAFC Fire-Rescue Med (Las Vegas) Informational session. Monday, April 30 **Noon Salon A**

EMS Today (Baltimore) Informational sessions. Friday, March 09 and Saturday March 10 @ 11:30 at the *National Association of EMS Educators* booth 186.

January 18, 2007: NFA releases *Draft 2.2* for organizational review and comment. - responses due back by February 18.



outcomes, outline, references/resources and a point of contact.

National Fire Academy Professional Development Model

The National Fire Academy (NFA) has been involved in fire-based higher education and professional development since the creation of the *Degrees at a Distance* bachelor program in the 1970's. NFA expanded this mission in 1999 by starting the *Fire and Emergency Service Higher Education (FESHE) strategic direction*. NFA assembled interested faculty from fire-based associate and bachelor degree programs to work with fire service stakeholders to update the fire-based curricula that was established at the 1966 Wingspread Conference.

Working as a conduit, NFA provides an annual meeting at the Emmitsburg, Maryland, campus where interested academic and fire service members donated their time and talent to develop a model fire-based associate and bachelor curricula. During the 2002 conference, NFA had arranged a roundtable with the fire science textbook publishers. By Academic Year 2006 - 2007 all of the model fire science courses have two or more textbooks that meet the FESHE curricula.

The National EMS Management Curriculum committee believes that participating in the FESHE process will generate educational resources that will assist the existing EMS Management degree programs and provide a template for other colleges and universities to follow.

No Federal funds have been expended to establish or maintain this webpage. The views and opinions expressed on these pages are those of the authors. The contents of this page have not been reviewed or approved by The George Washington University.

Proposed EMS Courses

[Foundations of EMS Systems](#)
[EMS Operations](#)
[Human Resource Management](#)
[Management of EMS](#)
[Quality Management and Research](#)
[EMS Educator/Instruction](#)
[Management of Ambulance Services](#)
[Safety/Risk Management](#)

Committee Members

Mike Ward (chair - GWU)
Bruce Evans (vice chair - CCSN)
Jeff Lindsey (NAEMSE)
Dave Becker (IAFC EMS Section)
Stephen Dean (Maryland)
Bob Seltz (Pittsburgh)
Seb Wong (Los Positas CA)
Angel Burba (HCCC Maryland)
Bruce Walz (Maryland)
Erik Gauli (NFA contract faculty)
[one page contact list](#)

Reports and Documents

[Draft 2.2 report 01/08/2007](#) (31 page, 178 KB .pdf file)
[Draft 2.1 without cover, Appendix 3, 4 and 6](#) (11 page, 72 KB .pdf file)
[Appendix 3: Current EMS Management courses](#) (8 page, 46 KB .pdf file)
[Appendix 6: EMS Management Competencies](#) (8 page, 33 KB .pdf document)

Outreach Results

Bachelor degree in EMS Management

Similar to FESHE model bachelor degree.

Unique EMS courses

Foundations of EMS Systems

**Injury and Illness Prevention in the
Community**

EMS Quality and Performance Management

Management of Transport Services

FESHE Product

Model academic courses

Description, outcome, goals, learning objectives, resources and point of contact

Coordination with professional standards

“rookie to retired” coordination of technical training and academic courses linked to the professional requirements of:

- National Fire Protection Association
- International Association of Fire Chiefs
- Center for Public Safety Excellence

EMS Executive

Masters

EMS Chief Officer

Risk Management

Operations

EMS Manager

EMS Supervisor

Special Certifications

Preceptor/Instructor

Paramedic

EMT

Focused on
Horizon

Ability to
Manage

Focused on
Road

Ability to do
the work

EDUCATION

TRAINING

Required courses

EMS Core

Foundations of EMS Systems

**EMS Operations and
Administration**

**Injury and Illness Prevention
in the Community**

*EMS Quality and Performance
Management*

*Legal, Political, and
Regulatory Environment of
EMS*

Safety and Risk Management

General Education

Human Resource
Management

Basic Management

Statistics and Qualitative
Analysis

Financial and Managerial
Accounting

Health Care Financing

Microeconomics

Public Administration

Yellow are approved

*Blue are written and in 08-09
review process*

EMS electives

EMS Educator

Public Information, Education and Relations

Management of Transport Services

Analytical Approaches to EMS

EMS Finance

EMS Special Operations

Communication and Information Systems

EMS Labor Relations

Disaster Planning and Control

Yellow are approved, blue are written and in 08-09 review process

Green may come from existing DDP, NHTSA or NAEMSE programs