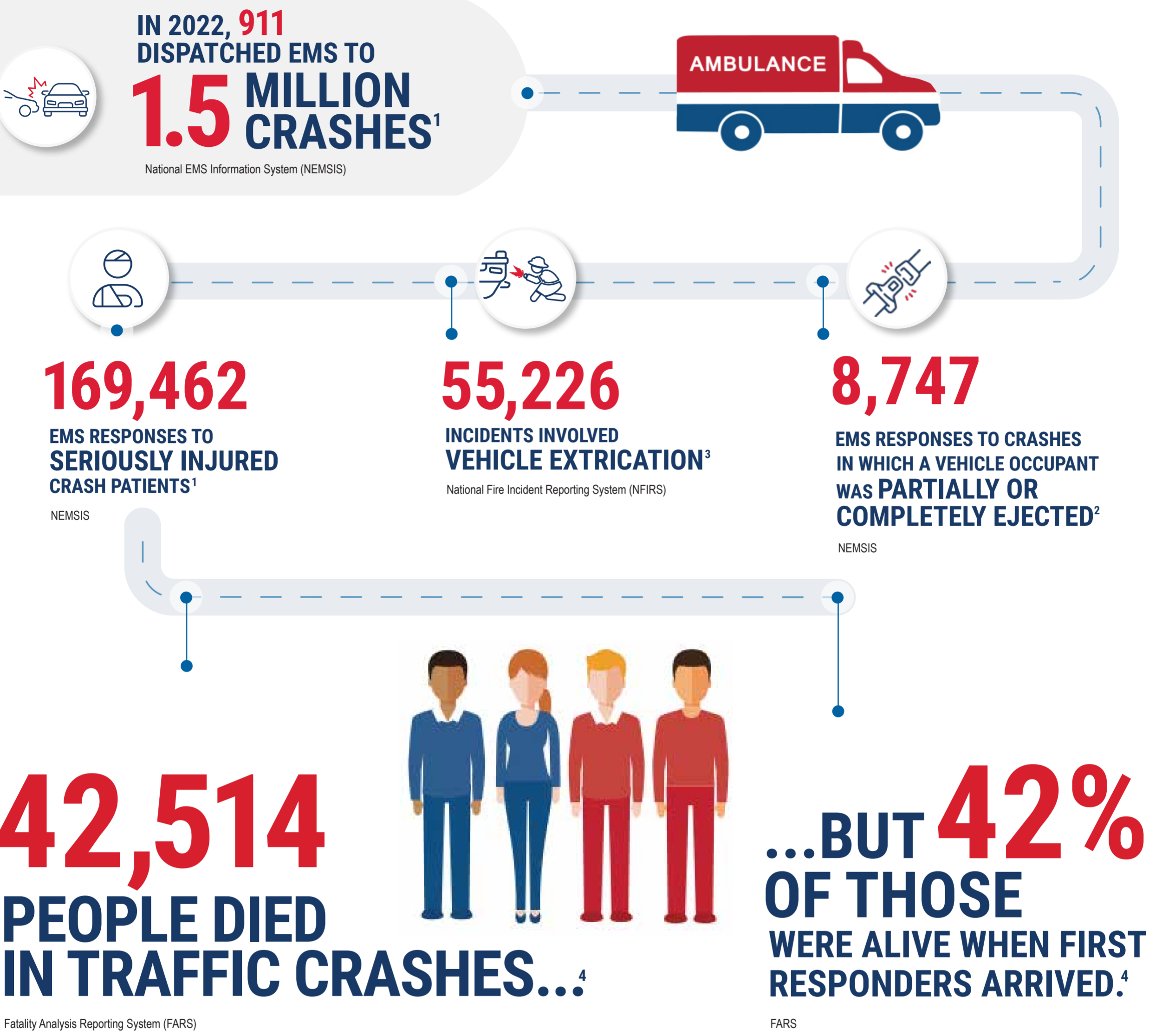


# POST-CRASH CARE



## PROBLEM IDENTIFICATION



## COUNTERMEASURES



## HIGHWAY SAFETY PLANNING

- 1. ACCESS YOUR STATE'S EMS CRASH DATA TO IDENTIFY PROBLEMS AND OPPORTUNITIES FOR IMPROVEMENT.**
- 2. CONNECT WITH YOUR STATE EMS OFFICIAL AND STATE HIGHWAY SAFETY OFFICE TO ADDRESS SPECIFIC CRASH PREVENTION AND POST-CRASH CARE CHALLENGES.**
- 3. INTEGRATE POST-CRASH CARE INTO YOUR HIGHWAY SAFETY PLAN.**

### References

1. NEMSIS Database, 2022 Data. Report generated 5/2/2023.
2. NEMSIS Database, 2022 data. Report generated 5/16/2023. Number of EMS Responses to Crashes in which a Vehicle Occupant was Partially or Completely Ejected includes EMS activations with elnjury.01 equal to ICD-10-CM codes within the following ranges: V40-49, V50-59, V60-69, or V70-79. Note: NEMSIS continuously receives data from clinical electronic patient care reports. These data may change as records are received or corrected.
3. Preliminary data from NFIRS Data Warehouse as of 4/24/24. Note: NFIRS is not a repository of all incidents that occur in the United States.
4. FARS 2022 Annual Report File (ARF). Report generated 4/15/2024, Version 7.2, released 4/1/2024.