

WHEN AMBULANCES CRASH

EMS Provider & Patient Safety

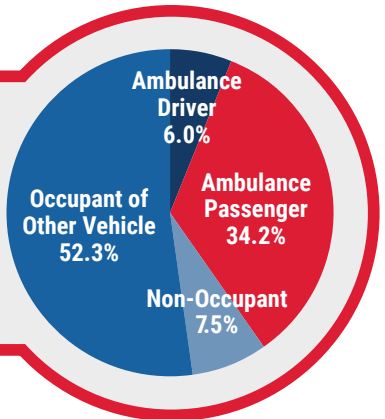


DATA COLLECTED BETWEEN 2012-2018

173 fatal crashes
Fatality Analysis Reporting System

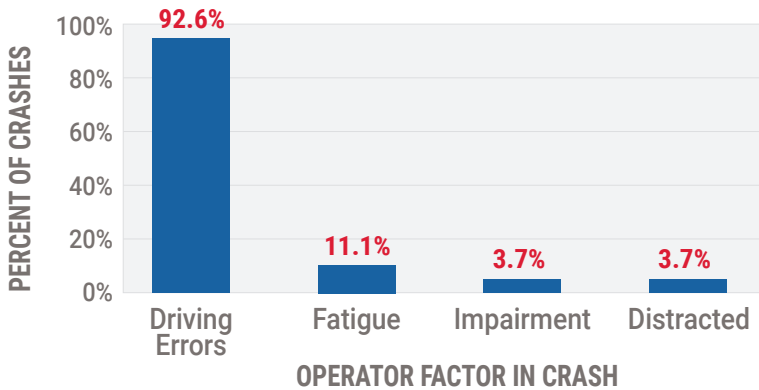
199 fatalities

28.4 people killed per year



NHTSA Conducted 27 Special Crash Investigations

crashviewer.nhtsa.dot.gov



91.9%

OF THE 37 EMS CLINICIANS IN THE PATIENT COMPARTMENT



WERE NOT RESTRAINED

ONLY 17.4% OF THE 23 PATIENTS

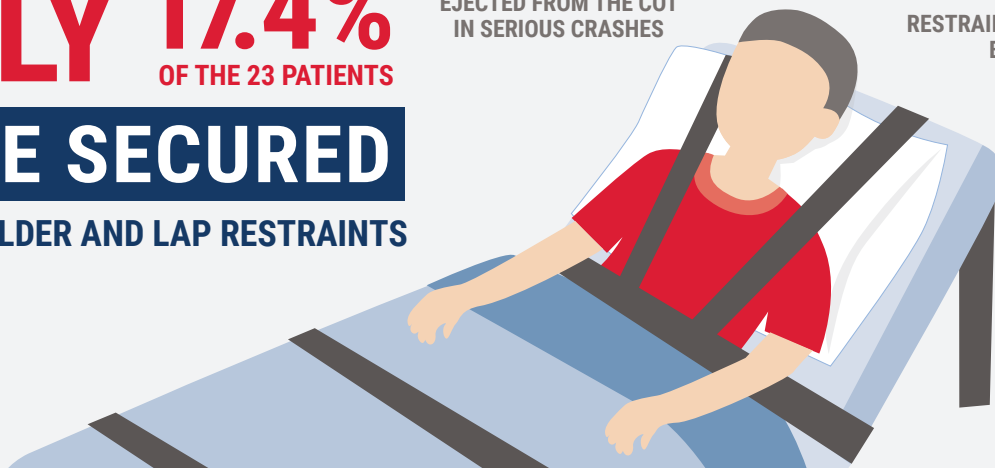
WERE SECURED

WITH SHOULDER AND LAP RESTRAINTS

44% OF PATIENTS WERE EJECTED FROM THE COT IN SERIOUS CRASHES

78.3% RESTRAINED WITH LATERAL BELTS ONLY

4.3% UNRESTRAINED



SIT DOWN & BUCKLE UP!
Secure Your Patients. They Rely on You!

This safety message brought to you by NHTSA's Office of EMS.



ems.gov